



## **TECHPRO PULLET CAGE SYSTEM .**

In order to meet the brooding needs of automated farms, TechPro pullet cage system is divided into brooding tiers and growth tiers according to different needs of chicken. TechPro pullet cage also can raise more chicken than common pullet cage in same size house.

Professional equipment allows your pullets to get better protection and growth environment.

# **TECHPRO PULLET CAGE SYSTEM**

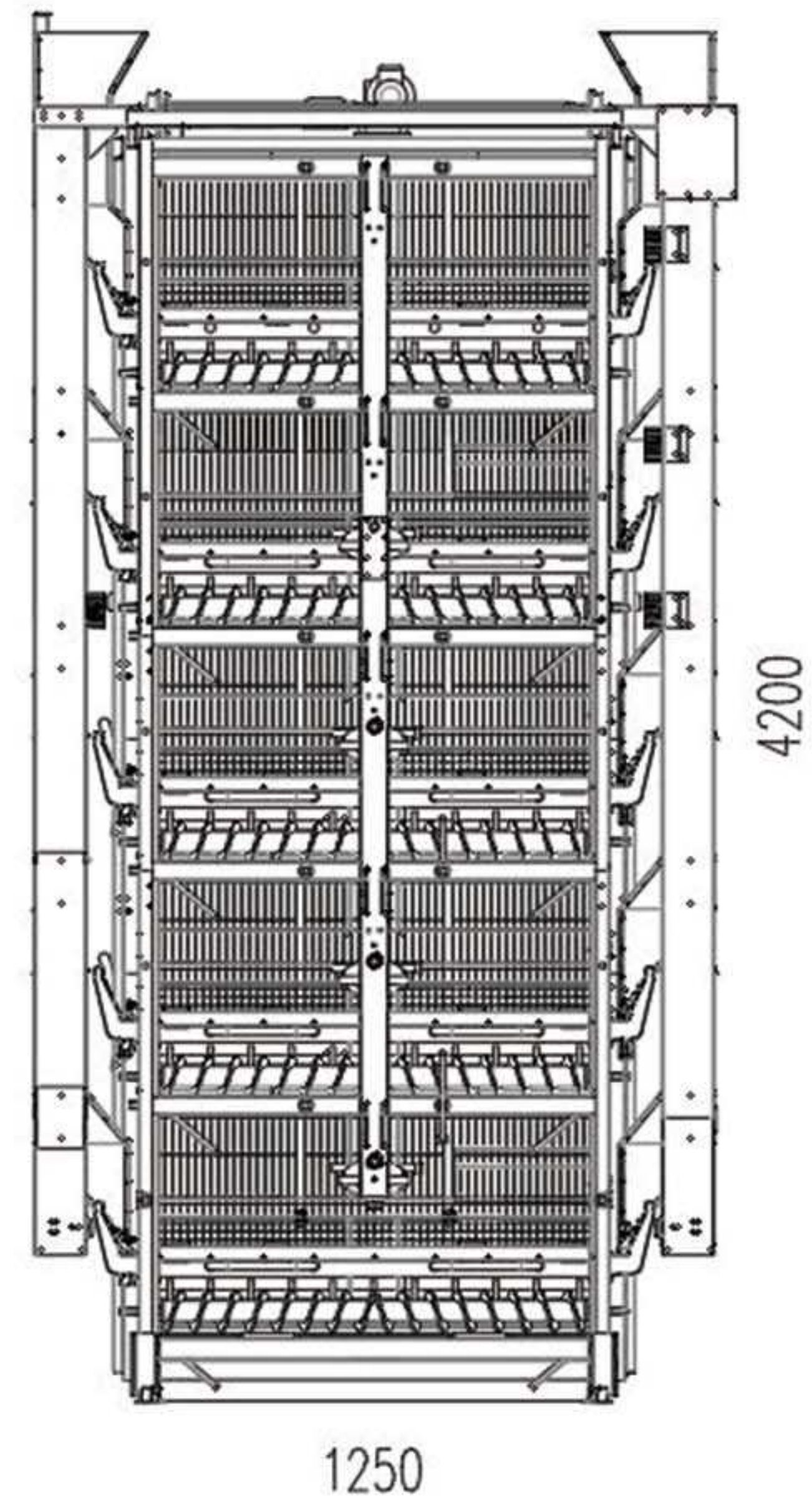
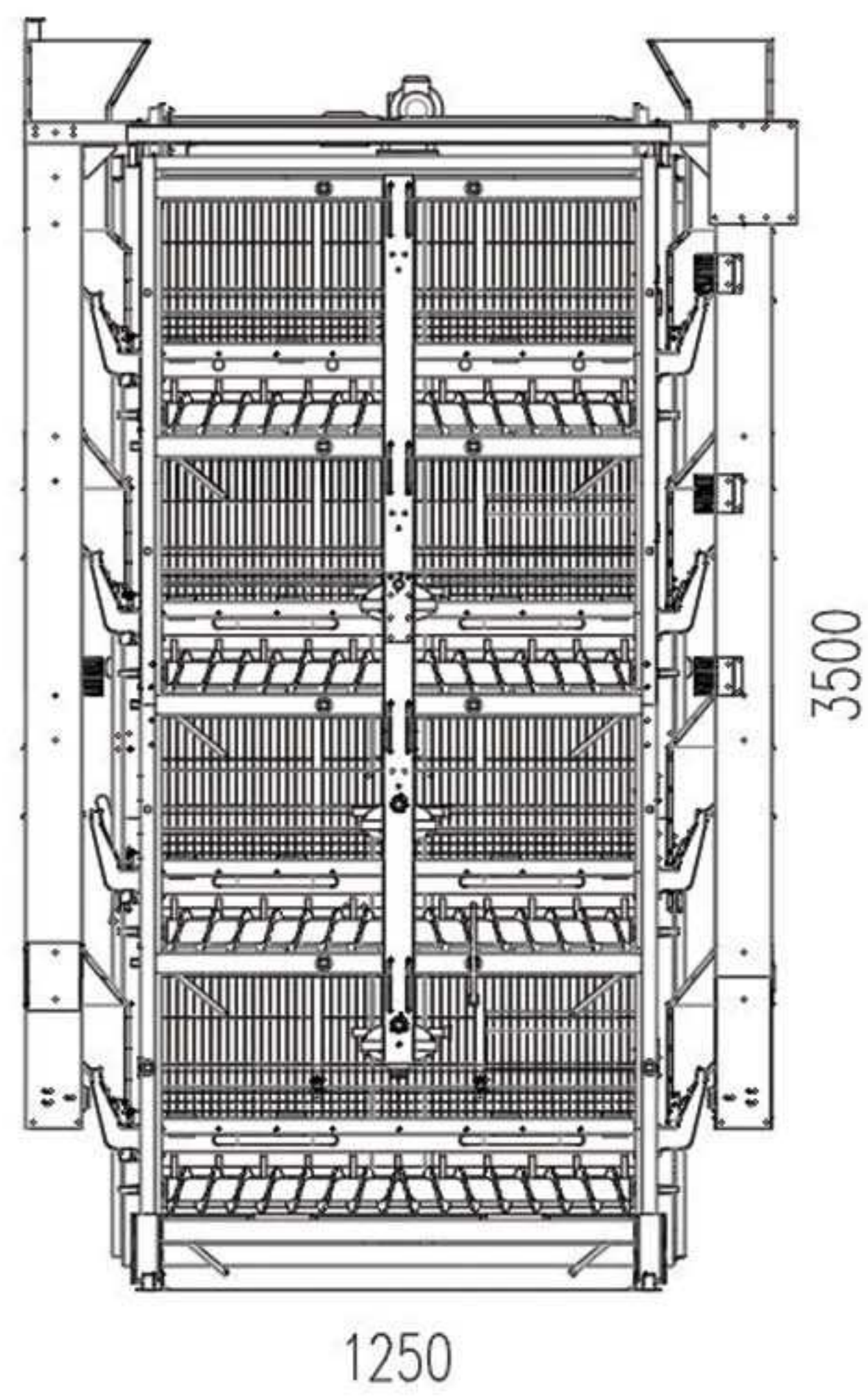
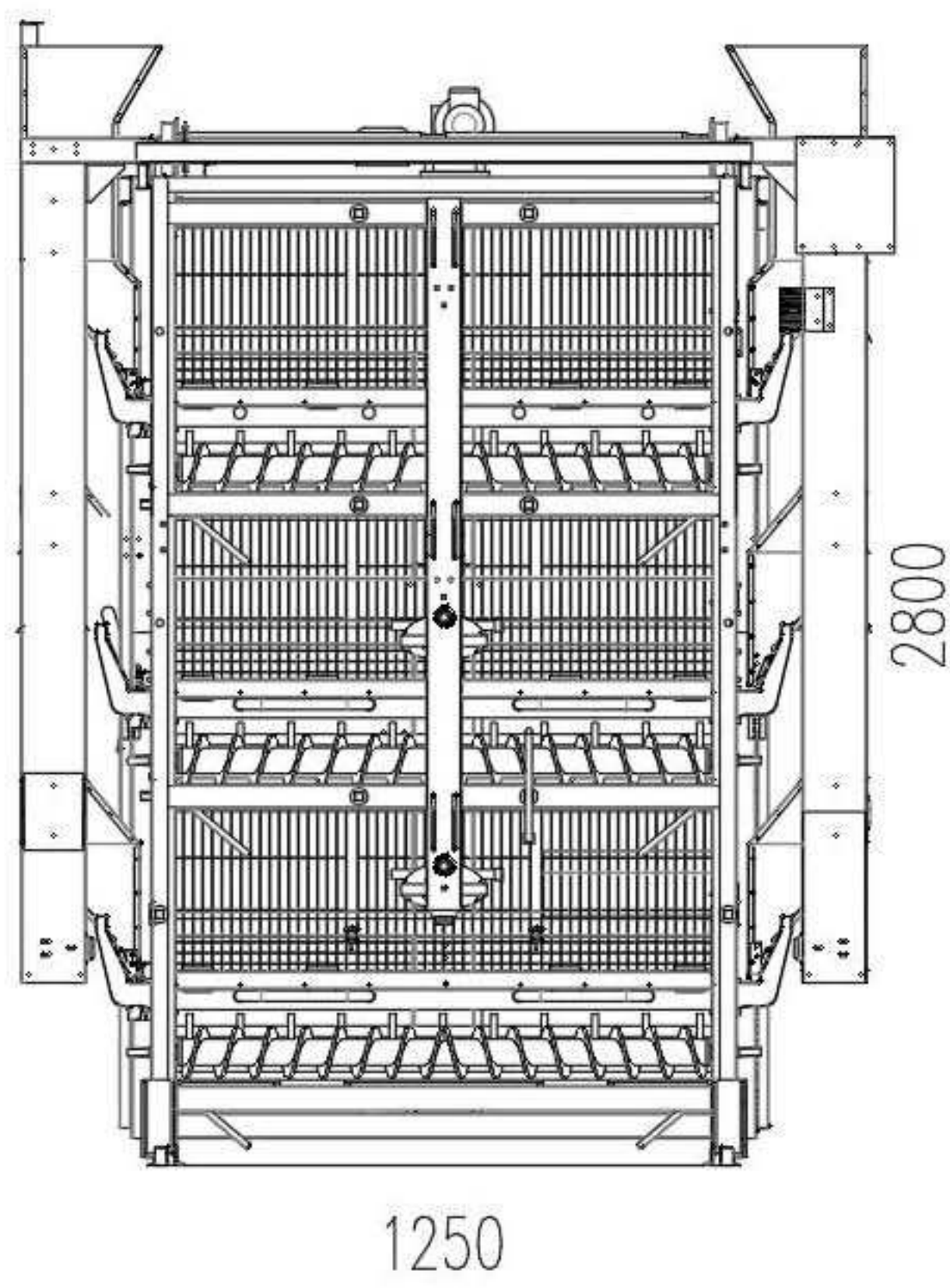
**-MORE TECH , MORE CARE-**

POULTECH



- Frame type structure with much more support and high stability
- Main structure is made of 275g/m<sup>2</sup> hot-dipped galvanized steel sheet.
- Cage frame:  $\delta \approx 2$  mm, beam  $\delta \approx 1.5$  mm, feed trough:  $\delta \approx 1.0$  mm
- The cage frame can be customized according to the requirements

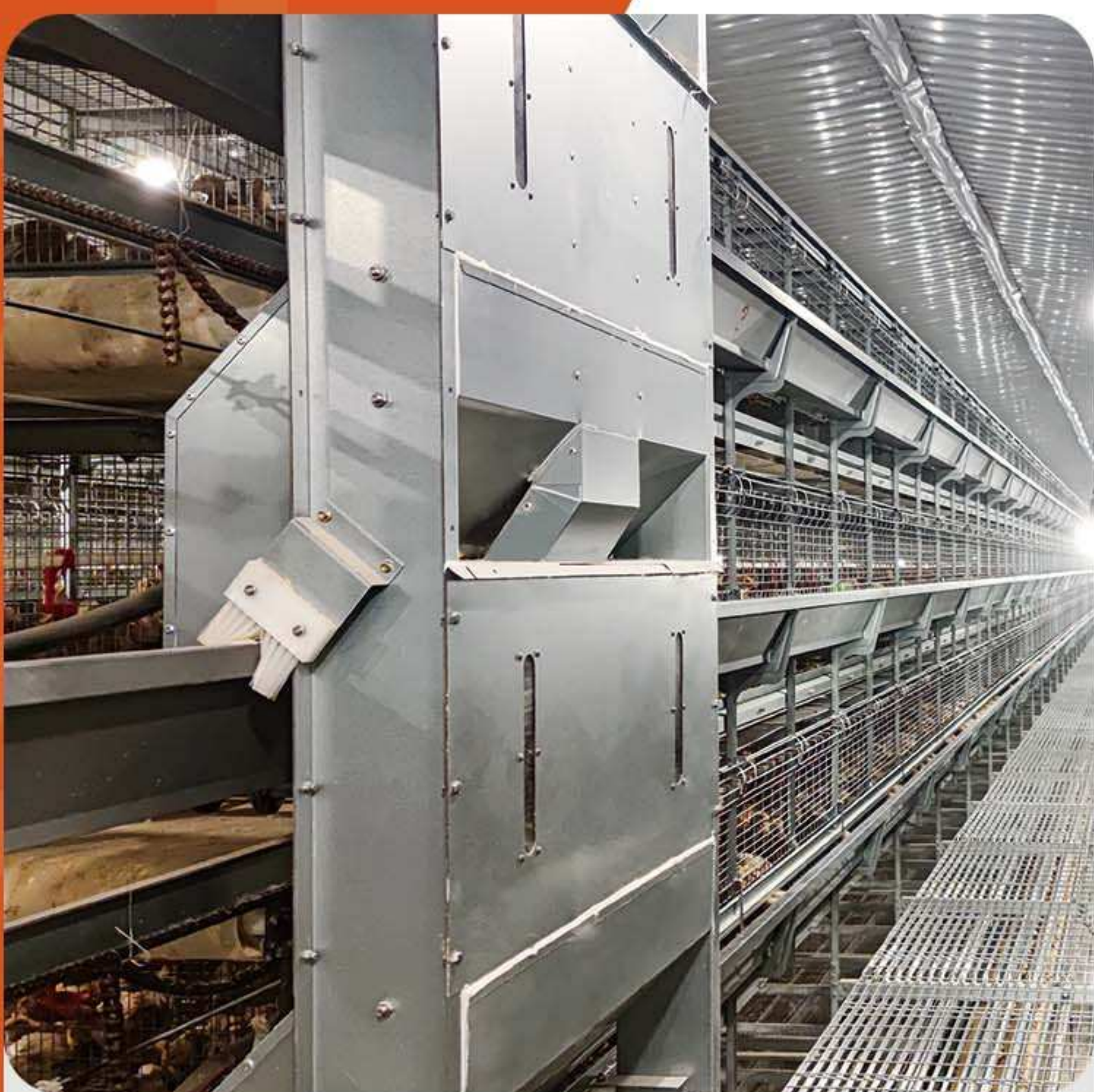
- Zinc-aluminum coated cage wire mesh, 3-4 times better protection against corrosion compared to galvanized wire
- Bottom mesh is smooth and elastic, with a diameter of 2cm, at the early growth stage of chicks, we matched with plastic mesh as the cushion
- The cage wire mesh can be customized according to the requirements



| Length  | Dimension/Cell | Cell/Unit | Birds/Cell | Space/Bird  |
|---------|----------------|-----------|------------|-------------|
| 1200 mm | 600*625 mm     | 2         | 12         | 312.5 sq.cm |
| 1400 mm | 700*625 mm     | 2         | 14         | 312.5 sq.cm |



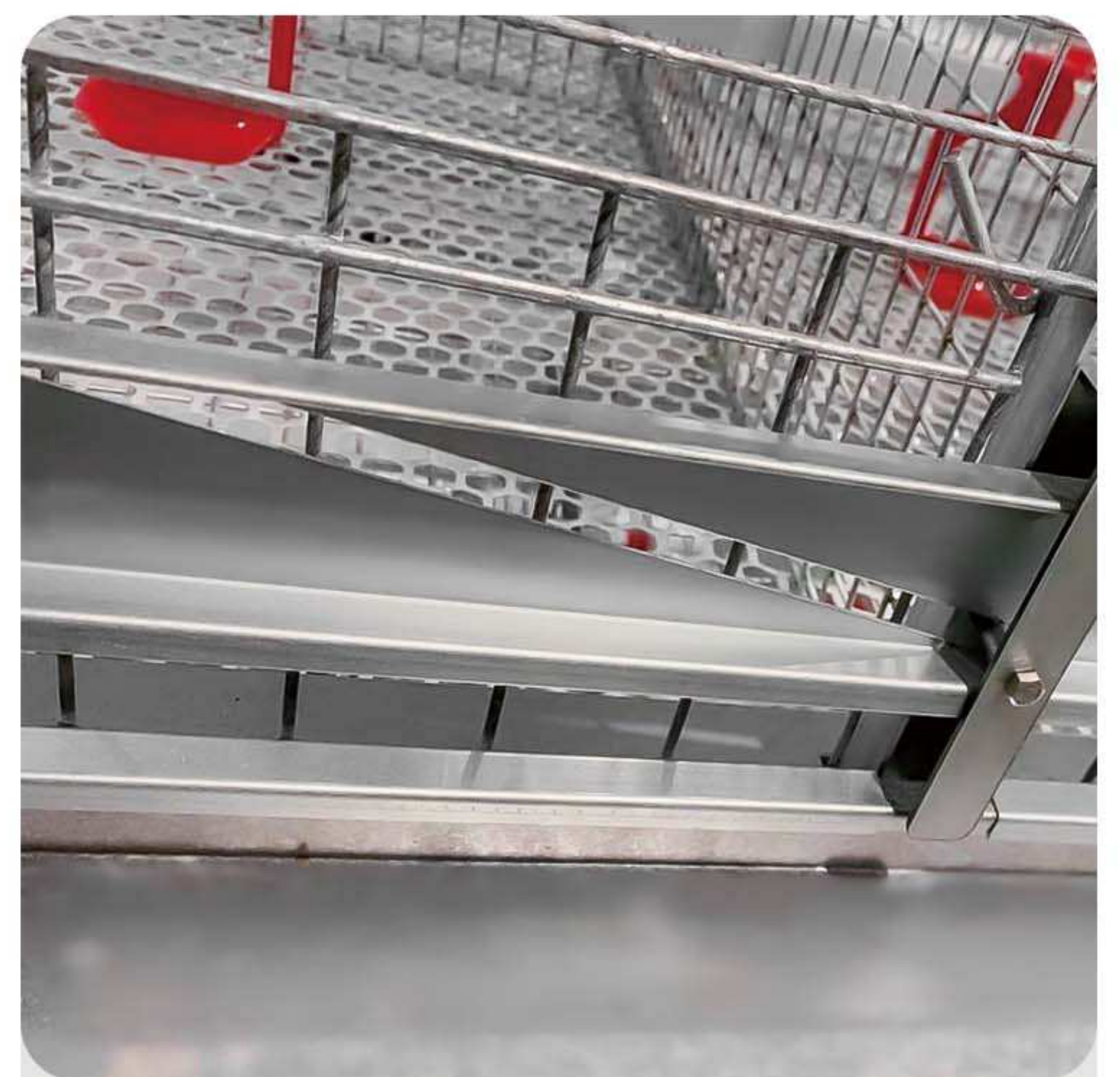
## AUTOMATIC FEEDING SYSTEM



- Made of 275g/m<sup>2</sup> hot-dipped galvanized steel sheet
- Main frame:  $\delta \approx 3.0$  mm
- Hopper support:  $\delta \approx 3.0$  mm
- Hopper:  $\delta \approx 0.8$  mm
- Capacity: 65kg for top hopper, 60 kg for rest hopper



- The trough is made of  $\delta \approx 1$  mm zinc-aluminum-magnesium co-ated steel sheet
- The feeding position height is adjustable and the height can be adjusted according to the growth period
- Feed trough support:  $\delta \approx 2$  mm

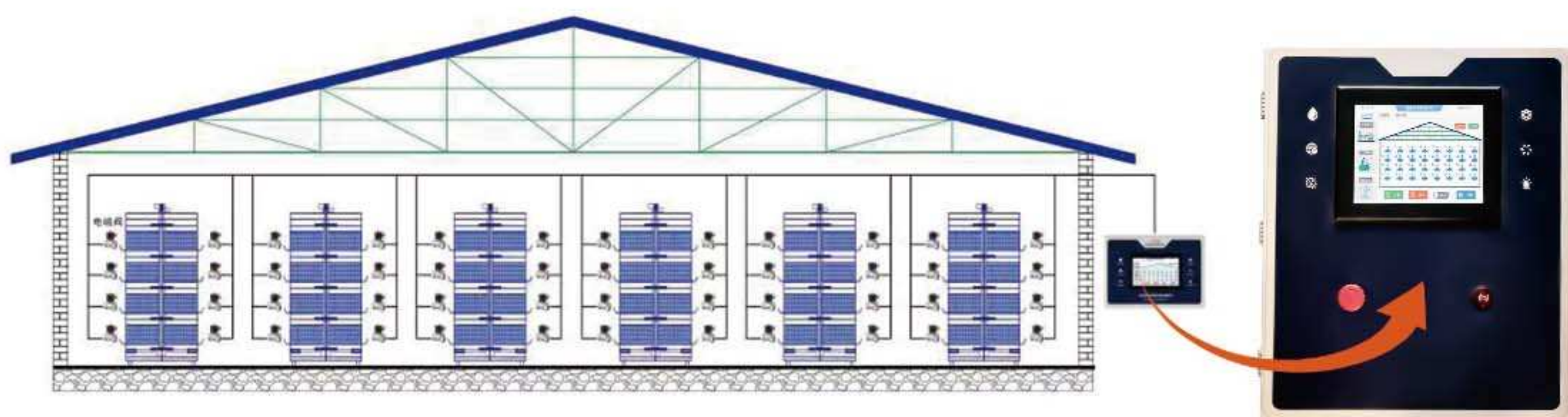


- 275g/m<sup>2</sup> hot-dip galvanized sheet, one-piece stamped with reinforcement ribs
- The feed trough regulating device has one set at both front and rear end, with mechanical lifting, making it more convenient to use and preventing the regulating board from deforming due to reverse force

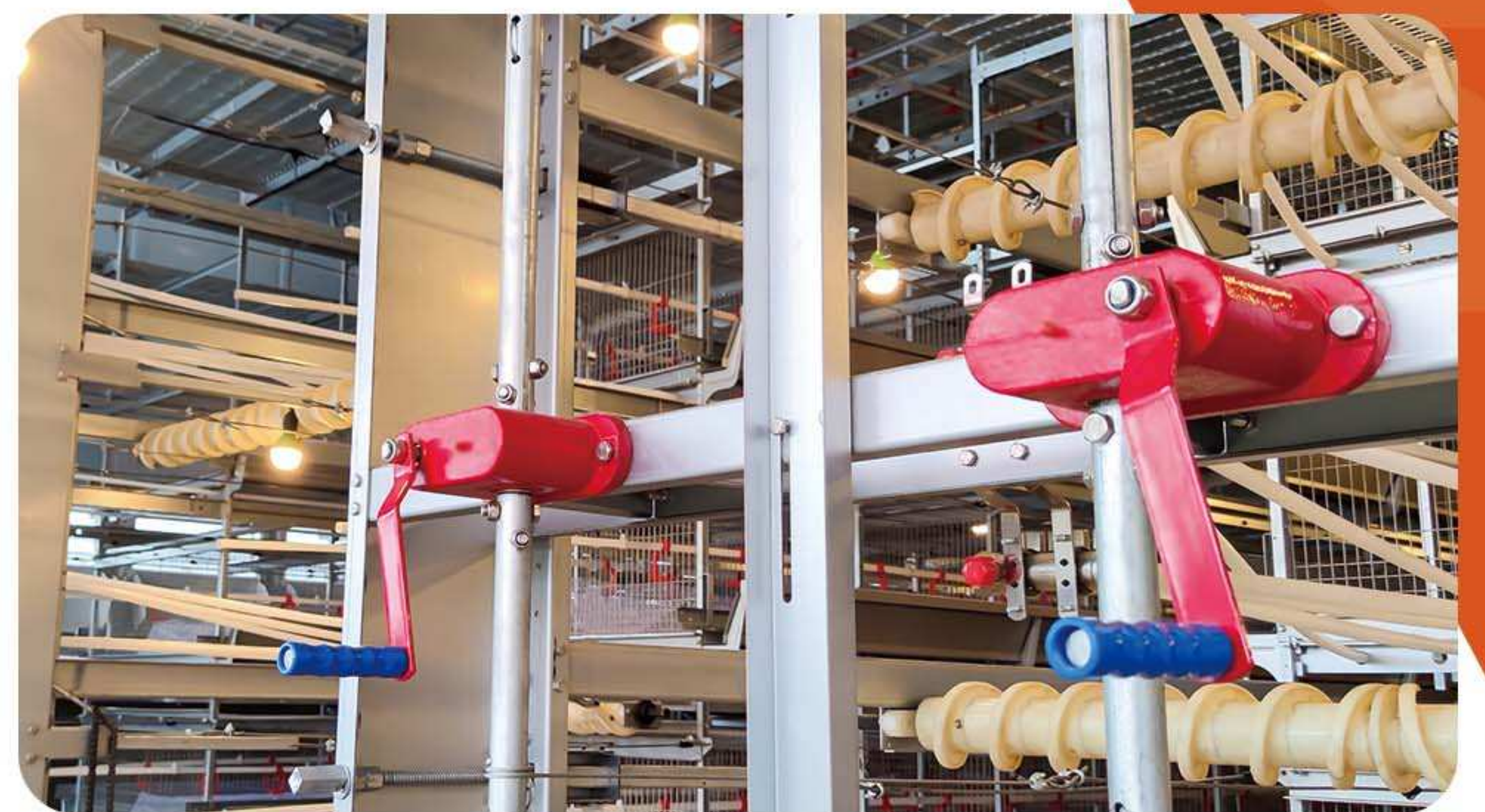


## AUTOMATIC DRINKING SYSTEM

- During the early stage of pullets, small plastic feeders and drinkers are configured, and pads can be laid at the bottom of the cage
- Overall water line can be adjusted in height according to the growth cycle, meeting the water supply needs of pullets in different growth period



Smart Drinking Line Control System



- Multiple function includes water supervision, pressure, PH data, Index analysis , dosing , warning , system update
- The water drinking system is equipped with the filter and backwashing device to reduce water pipe blockage
- The water drinking system is equipped with an alarm and data collection system to grasp the water situation of the chickens in real time and analysis the growth status

TECHNICAL



## AUTOMATIC MANURE REMOVE SYSTEM



- Manure removal machine: motor 1.5kW
- Manure belt speed: 2m-2.15/min
- Manure belt support is made of 275g/m<sup>2</sup> hot-dipped galvanized steel sheet, thickness  $\delta \approx 1.0\text{mm}$
- Manure belt:  $\delta \approx 1.1\text{mm} \sim 1.2\text{mm}$ , made of high quality new PP material



- The side panel of manure removal end set is made of 275g/m<sup>2</sup> hot-dipped galvanized steel sheet, thickness  $\delta \approx 3.0\text{mm}$
- Hot-dipped galvanized manure scraper with strengthen manure scraper system



- The main transmission gear is made of 45# steel, and the driven gear is made of wear-resistant nylon, which is wear-resistant and noiseless
- The front and rear devices prevent the manure belt from deviating, while not damaging the belt itself





## VENTILATION SYSTEM.



- 275 g/m<sup>2</sup> steel material imported from Japan
- 430BA stainless steel blades have been tested for dynamic balance, and the fan runs more smoothly and efficiently
- To control the speed of the wind and provides the comfortable somatosensory temperature for the chicken
- Eliminate harmful gases in the house



- According to the principle of atmospheric air flow mechanics, with mechanical exhaust and negative pressure air intake design, the indoor contaminated air can be quickly exhausted outdoors. After the outdoor fresh air is purified, it enters the house in a natural balance, forming an exchange of indoor and outdoor air flow, and maintaining the air quality of the indoor space



- Maintain a good level of hygiene and comfort
- Provide chickens with sufficient oxygen
- Cooling pad can be used in conjunction with the wind plates to create a circulation inside the coop
- Protective netting can be added as required to protect the cooling pad from gnawing and damage



## ENVIRONMENT CONTROL SYSTEM .



- Ventilation smart controller imported from Tuffigo-Rapidex, France, by the control of different modules of the air inlet to achieve the constant temperature inside the poultry
- Avitouch can be personalized. And view your poultry house in 3D to get as close to reality as possible.
- On the screen you can see the main parameters: average temperature of the indoor detector, universal temperature set point, indoor humidity, minimum fresh air demand, ventilation status, total number of birds, water meter and feed weighing
- IOT system is available, all equipment and data can be monitored remotely

POULTRY TECH



### **ADDRESS**

Building 10-1, Yuhua Power-Valley Industry Park, Chuangxin Avenue,  
Zhengzhou Hi-Tech Zone, 450001, Henan Province, China.

### **HOTLINE**

+86 0371-56797621

### **E-MAIL**

info@poultech.com

### **MOBILE (WhatsApp & WeChat)**

+86-19900937964

+86-18339994285

### **WEBSITE**

www.poultech.com



**HENAN POUL TECH MACHINERY CO.,LTD.**