




POUL TECH CLOUD DIGITIZING FARM

POUL TECH Cloud Digitizing Farm integrates AI+VR technology, Internet+ and visualization, devotes to helping customers to manage farms better through the 2D and 3D visualization of farming equipment simulation, monitoring, analysis and control.


Pioneer Of Super-High Constant-Temperature Farming Equipment
Pioneer and Forerunner of Digital Farm Management Theory



HENAN POUL TECH MACHINERY CO., LTD.

 Building 10-1, Yuhua Power-Valley Industry Park, Chuangxin Avenue, Zhengzhou Hi-Tech Zone, 450001, Henan Province, China.

 www.cnpoultech.com

 +86 0371-56797621



POUL TECH CLOUD DIGITIZING FARM

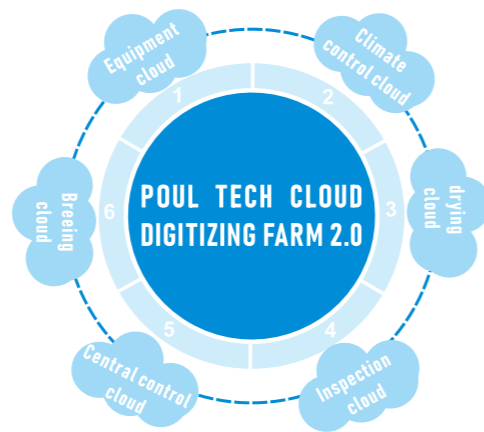
**UNLOCK THE PASSWORD TO
SUCCESS OF EASY FARMING**



WHAT IS DIGITIZING FARM



POUL TECH Cloud Digitizing Farm is a platform that realizes the integrated digital supervision of group farms, chicken houses, people, cars and materials, including equipment cloud, climate control cloud, drying cloud, inspection cloud, central control cloud, farming cloud and digital twins control platform.



WHY WE NEED DIGITIZING FARM



Over years, POUL TECH has integrated new information technologies such as artificial intelligence, the IoT(Internet of Things), and big data analysis to enhance the farming efficiency, strengthen the overall management capabilities, reduce farming difficulty and risks, and improve farming economic returns. Through the visual management approach, it manages farming equipment comprehensively from macro to micro in a real-time, dynamic, and intuitive manner.

The fascinating visual effects, comprehensive data integration, and scenario-based business display effectively improve the efficiency of farm managers in monitoring and managing, and supports smart farming and decision-making.

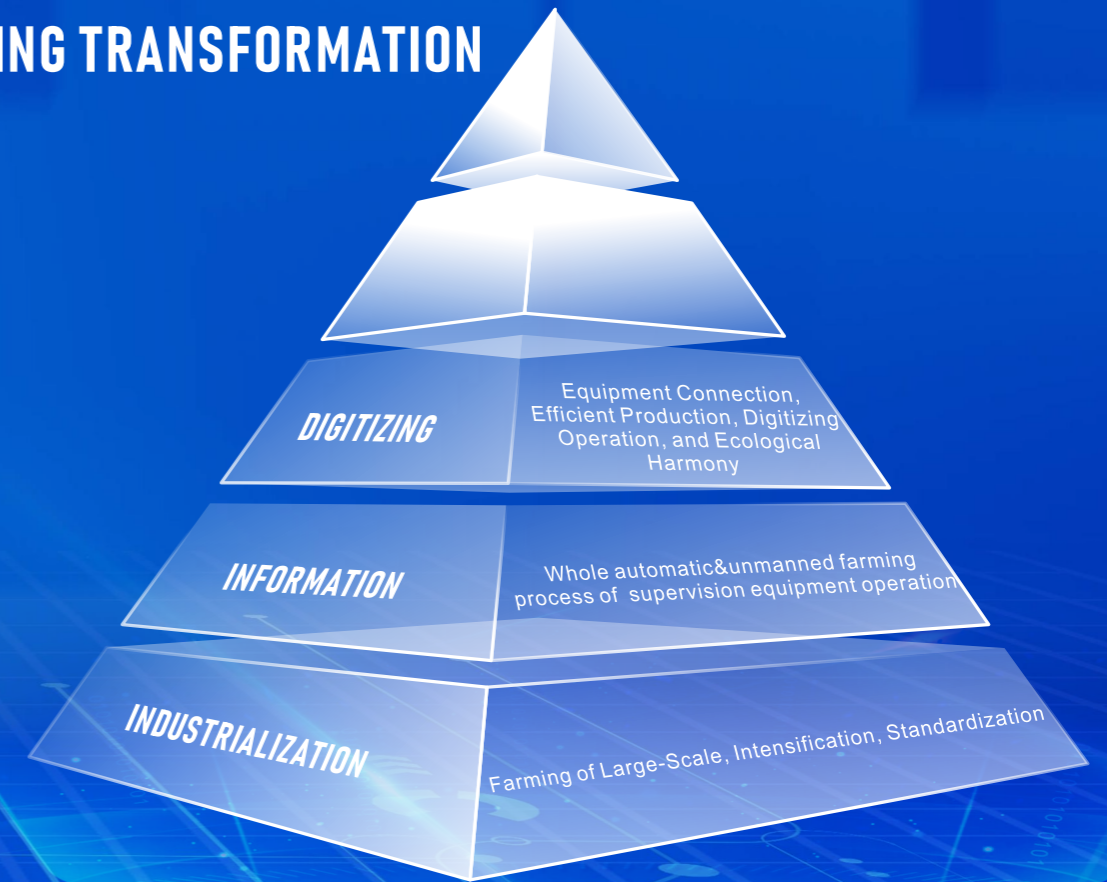
We realize the virtual simulation of the data center which enables management team to monitor the effective information clearly during farm operation. Transparent and visual management effectively improve the efficiency of farm asset and monitoring management, enabling 3D and visualized management of new data-driven farm operations.

DIGITAL FARM ADVANTAGE



Real-time comparison of multi chicken houses and multi-batch farming data to optimize the farming solutions for customers.	Multi-point, multi-level and multi-form alarm to reduce the risk of farming.	Early alarm is executed based on big data analysis to reduce the failure rate of farming equipment.	The management platform pushes the maintenance notification according to the running time to extend the service life of farming equipment.
Access of the IoT (Internet of Things) and remote operation & maintenance reduces the operation difficulty.	Comprehensive supervision of water, electricity, feed and eggs assist customers to improve benefits.	Access of unmanned inspection and remote control reduces labor cost, and realizes unmanned management in a real sense.	Access of farming ERP management assists customers in financial data analysis and control.
Management software adds farming plan and farming manual to assist customers in farming management.	Supervision of staff and vehicles reduces the infection rate of diseases inside farms.	The monitoring of the farm enhances the farming safety and staff control with management software.	Data presentation on the large screen for intuitive monitoring of equipment, and intuitive management&statistics of the farming process data.

DIGITIZING TRANSFORMATION



DEVELOPMENT HISTORY



2018

Establishment of IoT (Internet of Things) laboratory, data collection

2019

Device networking 1.0, viewing the operating status of fans from the cloud

2020

Climate control IoT 1.0, remote reflection of AVI TOUCH climate controller, remote view and access

2021

Equipment IoT(Internet of Things) 2.0, farm IoT(Internet of Things) construction, client, mobile, APP, computer multi-terminal access, data analysis

2022

Manure IoT 1.0, remote management and view of chicken manure drying equipment, data analysis

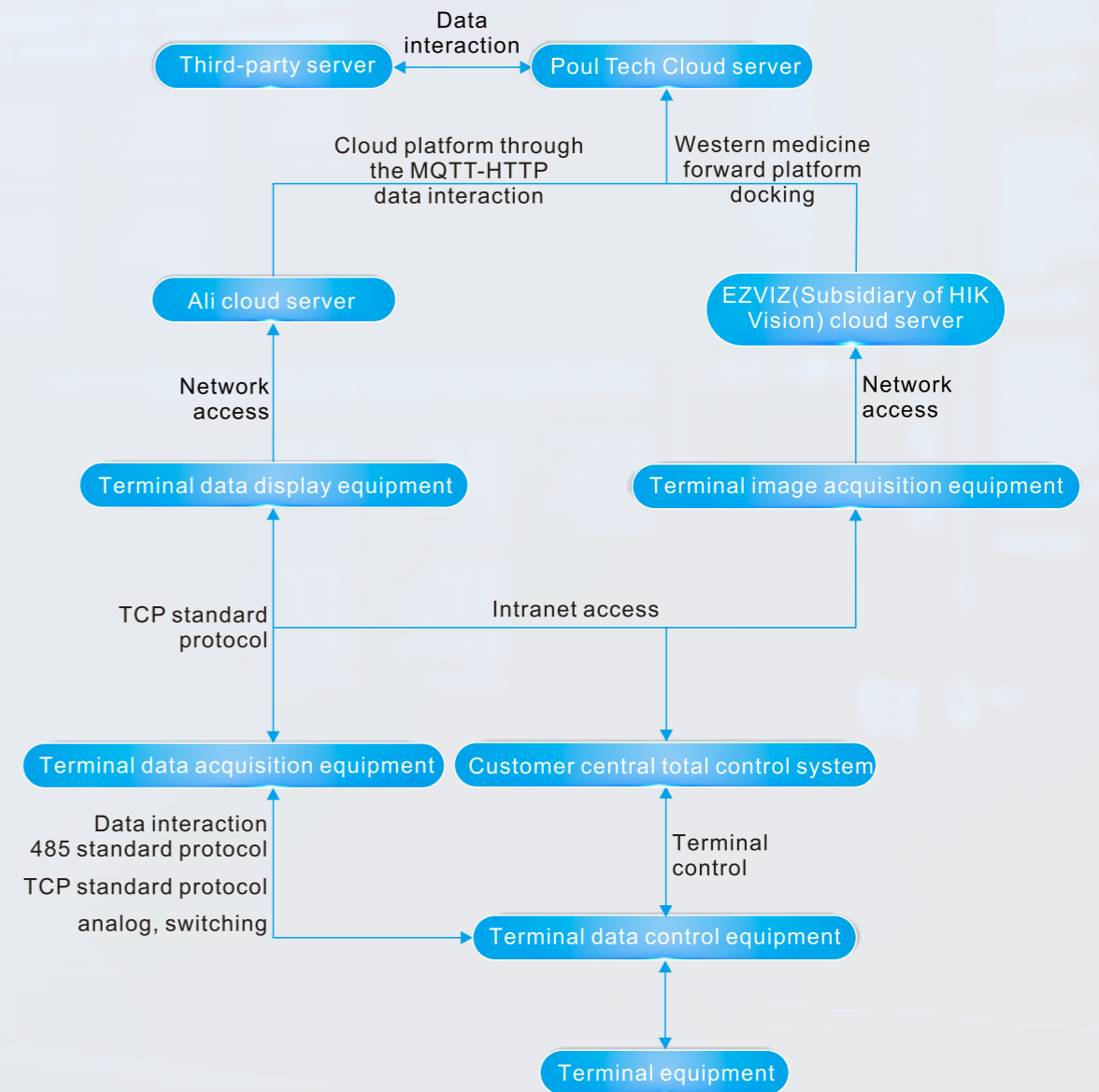
2023

POUL TECH Cloud Digitizing Farm Central Control Platform, a management system, covers all the equipment of the farm, staffs and feed

EQUIPMENT HARDWARE



POUL TECH DATA PLATFORM



CLIMATE CONTROL CLOUD

It is the cloud platform of the internal climate control of the chicken house, including Tuffigo Climate Control and POUL TECH Premium Climate Control.



DATA STORAGE

All the farming operation data can be stored on the POUL TECH cloud server for a long time. We provide one year free data storage, and subsequent customers can pay aromatically on the platform according to their demand, which realize the cloud storage, cloud view and cloud access of the farming data.

HIGH RELIABILITY

Farming data is the real-time data stored by the terminal acquisition equipment and the real-time docking of the field sensors. Real-time data is more reliable than traditional recording mode.

DATA COMPARISON

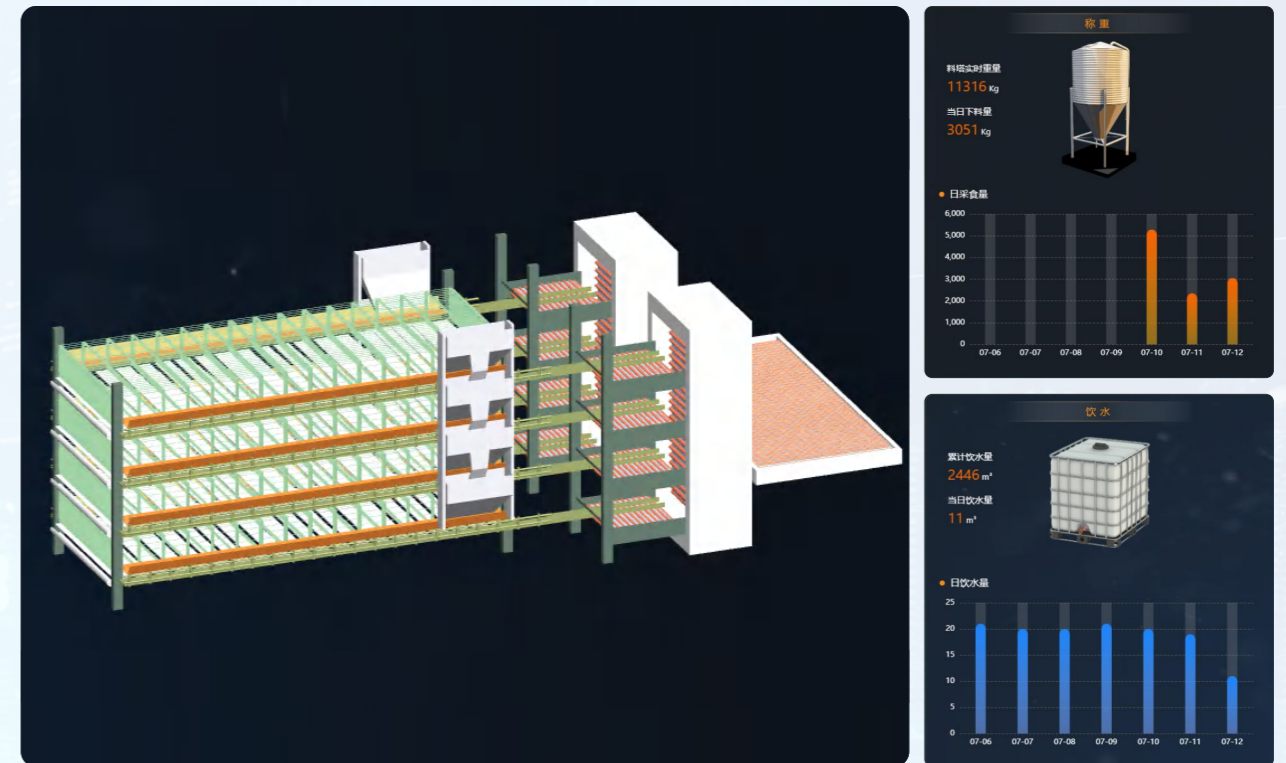
Customers could conduct real-time comparative analysis of the farming data from multiple houses, analyze the impact of the environment on the laying rate and good-egg rate to adjust climate control scheme.

ONE-CLICK PARAMETER SYNCHRONIZATION

Cloud one-click parameter adjustment and distribution is easy for customers to conduct simple and efficient centralized management.

EQUIPMENT CLOUD

Equipment cloud is the management platform for all farming equipment in the chicken house except the climate control



HIGH VISIBILITY

Customers can visually observe all the chicken houses on the PC or mobile phone and record all equipment operation in real time.

CLOUD CONFIGURATION

Based on the IoT(Internet of Things), customer can customize various interfaces and display different modules according to their demand.

DATA EXPORT

Customers can export and view the data of any single day during the farming period, customize any export cycle and data to do comparison.

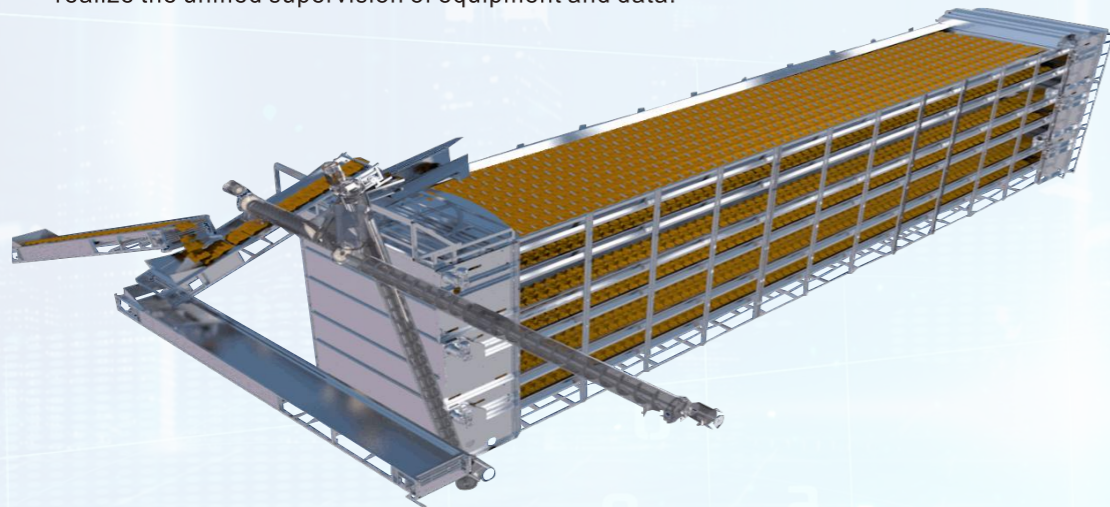
EASY MAINTENANCE EFFICIENT MANAGEMENT

Reduce farming data and staff operation.

DRYING CLOUD

Drying cloud is a cloud management platform for manure treatment.

Based on the original control equipment, the IoT(Internet of Things) is added to upload data to cloud, reducing the hardware input. The electricity meter, wind speed sensor, temperature and humidity sensor and belt scale realize the unified supervision of equipment and data.



EQUIPMENT MANAGEMENT

Remote system maintenance and upgrade equipment system can provide customers with better services.

EQUIPMENT MAINTENANCE

With internal equipment maintenance time, customers can regularly conduct equipment maintenance according to the manual to reduce the failure rate and after-sales input.

DATA MANAGEMENT

Data can be recorded for a long time, detailed to year, month, week. Data can be compared to facilitate customized management plans.

ALARM MANAGEMENT

The fault in the production process can be pushed. Information, SMS and voice alarm can be set more timely with less risk.

INSPECTION CLOUD

Inspection cloud is the cloud control platform of the unmanned intelligent inspection robot (SHEEPDOG) management system inside the chicken house.

Our inspection cloud platform is on the basis of the hardware development of chicken house inspection robot. The crawler and wheel walking unit of chicken house inspection robot can be configured according to the customer's chicken house situation and the inspection speed.

The maximum speed is 0.5 m/s, both sides lens inspection at the same time with short time and high inspection efficiency.



UNMANNED INSPECTION

Combining intelligent AI camera and robot, visual data building model for self-training and learning, unmanned automated inspection, efficient, safe and reliable.

DEAD&OBSOLETE CHICKEN INSPECTION

Identifying dead chicken, weak chicken, and making the real-time inspection and report.

ENVIRONMENTAL INSPECTION

Multiple environment monitoring per cage generates environmental cloud map without dead corner.

EQUIPMENT INSPECTION

Equipment status inspection, data automatically reported.

DATE ANALYSIS

According to the number of eggs and birds the data of unqualified chickens was analyzed, and they were eliminated in real time.

CENTRAL CONTROL CLOUD

The central control cloud is the central control cloud platform in the farm except the chicken house.

It is an integrated platform for people, vehicles, feed, water and electricity in the factory, which is developed based on the rising demands of large-scale farms.

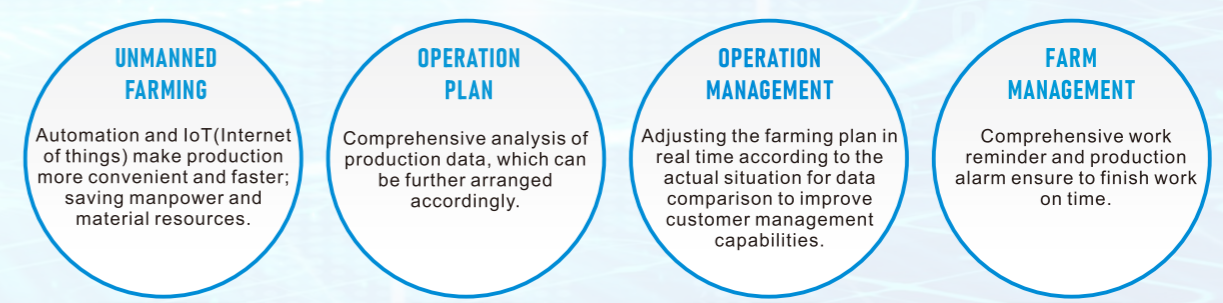
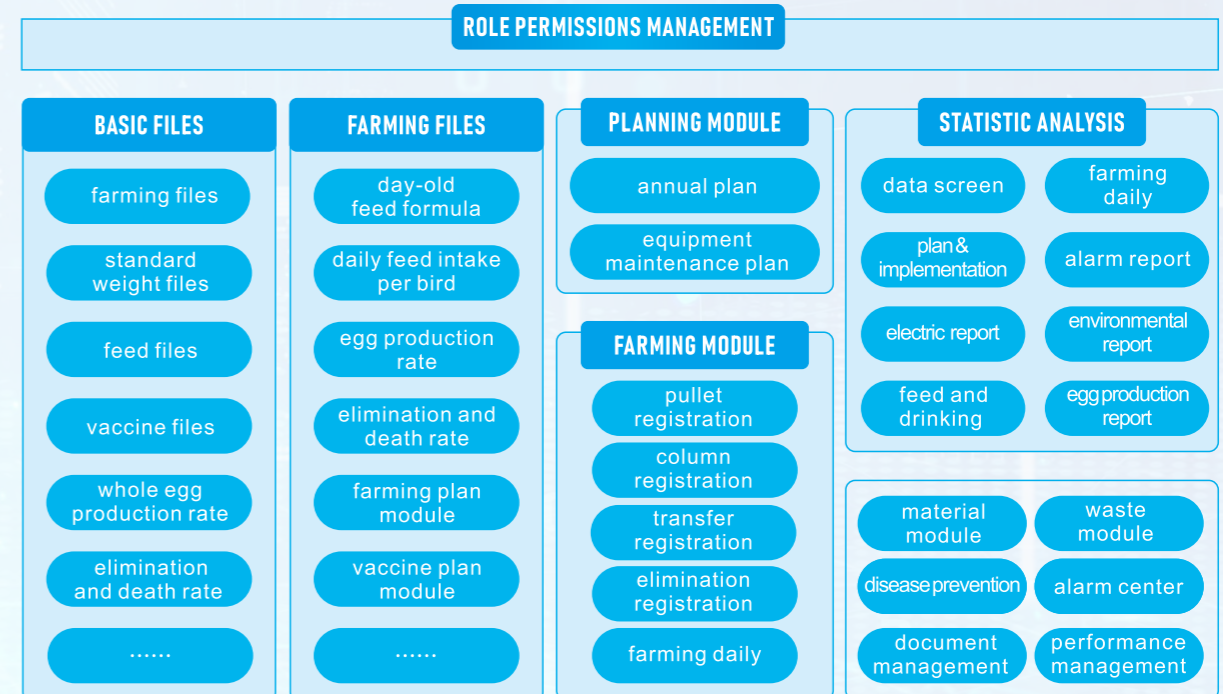


- CLIMATE CONTROL SYSTEM** ➤ Redundancy to monitor and control the field temperature, humidity, illumination, ammonia levels, etc.
- VIDEO SURVEILLANCE SYSTEM** ➤ Safety management, video monitoring of the factory and chicken house.
- AR OPERATION** ➤ Use AR lens to help customers for equipment maintenance and remote operation.
- DATA ACQUISITION SUBSYSTEM** ➤ Environmental data, weighing data and egg laying data of the chicken farm were collected.
- STAFF MANAGEMENT** ➤ Make production plan, large-screen display of production data, data summary and analysis, etc.

FARMING CLOUD

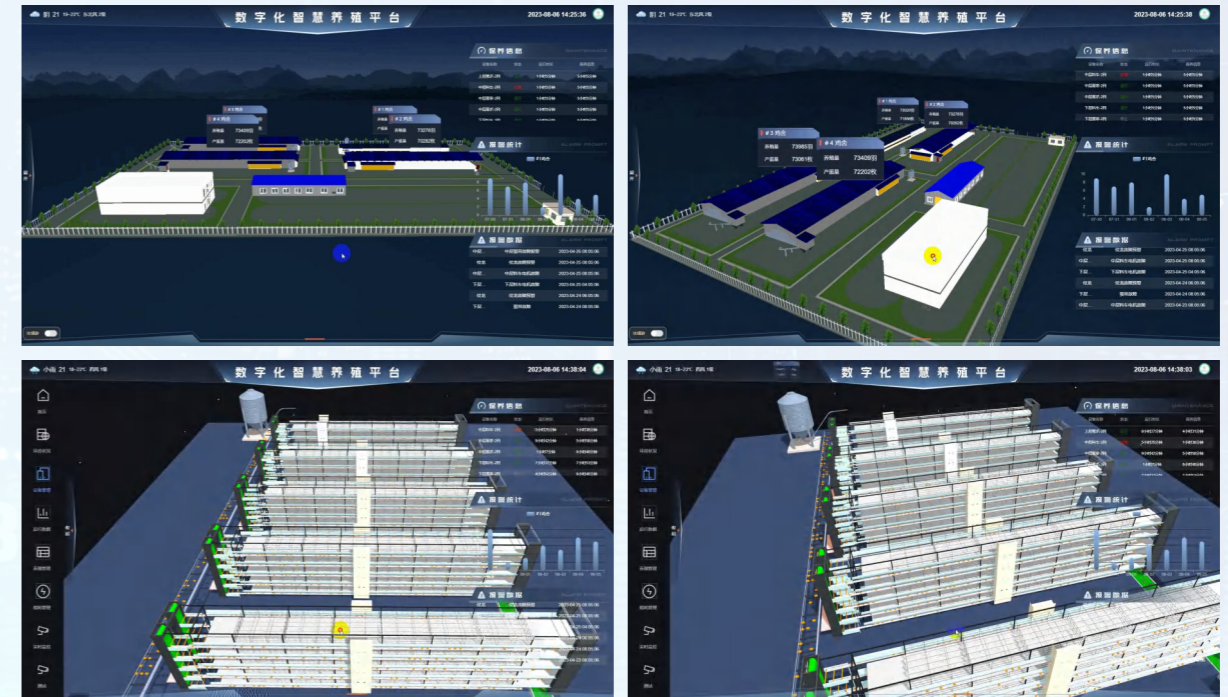
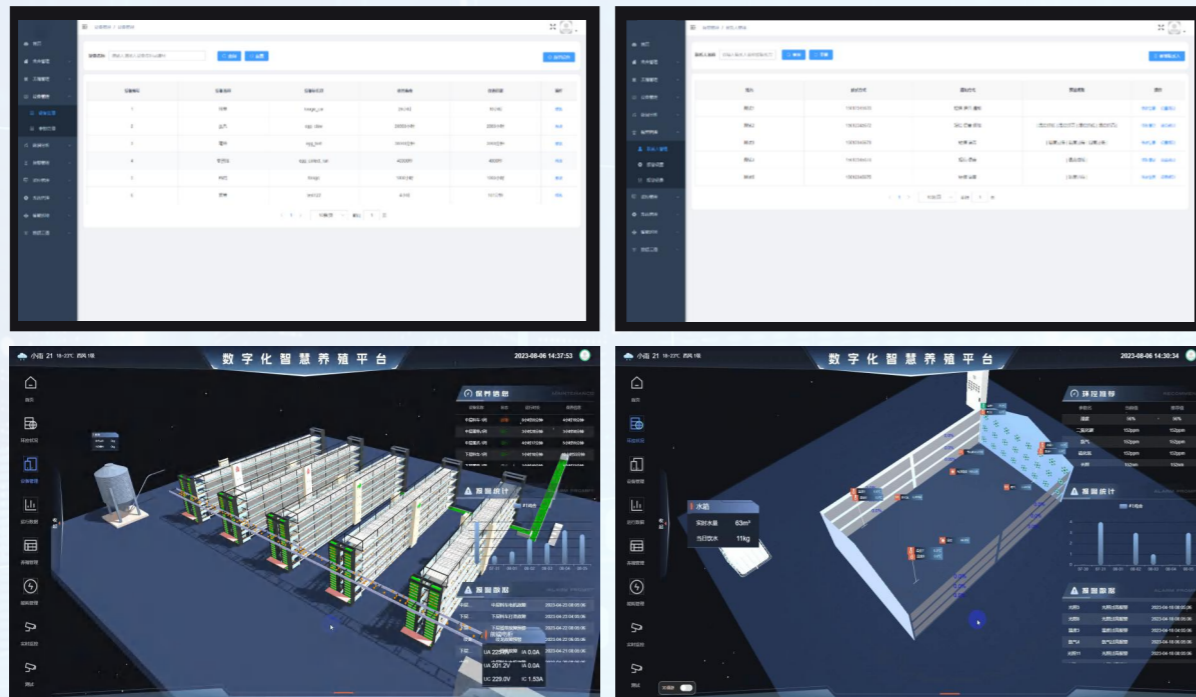
ERP platform integrating farming and financial management

Birds in the farm can be pre-planned and recorded in real time at each stage from planning to elimination. The overall management of all materials and financial data in the factory..



DIGITAL TWINS

Through visual management, the farming digital twins platform is real-time, dynamic, intuitive to the farming equipment from macro to micro management. We provide customized solutions, starting from single chicken house and gradually expanding to whole farms and farming groups.



BREEDING MANUAL

Built-in various birds farming manual. The farming cycle can be planned according to the manual.

DATA COMPARISON

Multiple chicken houses and batches of chickens can call the specified time of farming data for comparison.

EQUIPMENT MANUAL

Built-in equipment maintenance manual. Equipment maintenance recommendations based on cumulative hours of operation to improve service life.

ALARM MANAGEMENT

Alarm data and notice are pushed to customers in various forms, such as SMS, phone call and interface prompt, to reduce farming risks.

FARM VISUALIZATION

Customized 3D visual interface of farm & real-time supervision of each chicken house farming status.

CLIMATE CONTROL VISUALIZATION

Customized environment interface, Monitoring equipment in real time to realize the 3D visualization of the chicken house climate control information.

EQUIPMENT VISUALIZATION

Customized equipment interface. Monitoring equipment in real time: egg collection, feed, manure removal and other farming equipment.

DATA VISUALIZATION

Customized data display interface. Real-time checking equipment operation and climate control data is more efficient and convenient.